



Maryland Hospital Association

# Maryland's Non-economic Damages Cap Works...

[www.mhaonline.org](http://www.mhaonline.org)

...And Compensation for Economic Damages has *No Limit*

## HOW THE CAP WORKS

2019 Cap is **\$815,000**



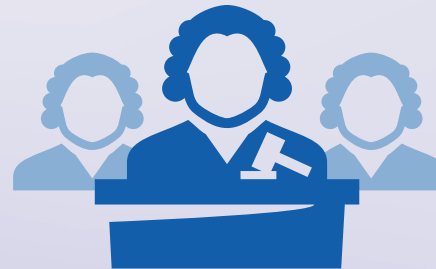
Cap rises **\$15,000** each year



Among states that have caps



Maryland's is among the highest



Passed by the legislature and upheld by the Maryland Court of Appeals

## MEETING INDIVIDUALS' NEEDS

Unlimited *economic* damages means

all past and future medical expenses are **covered**



Lost wages/income are fully compensated

How you can **HELP**

**Reject** efforts to **increase Maryland's cap** on non-economic damages.