

THE PRACTICE OF Leadership for Physicians 2017



The Maryland Healthcare Education Institute (MHEI) is offering The Practice of Leadership to physicians as a leadership development experience preparing them for the complex role of leading groups of individuals responsible for accomplishing critical strategic goals within constantly changing organizations. The seminar begins September 2017.

SEMINAR OBJECTIVES

The specific objectives of the seminar are to:

- Identify Leading-edge thought on leadership
- Explore a set of personal leadership skills that will enhance personal leadership ability and organizational performance
- Develop practical applications of leadership knowledge, skills and aptitudes that will advance the participant's practice of leadership
- Examine organizational environmental factors such as "culture," and "change," and determine appropriate leadership actions

In addition to these objectives, participants will also have the opportunity to:

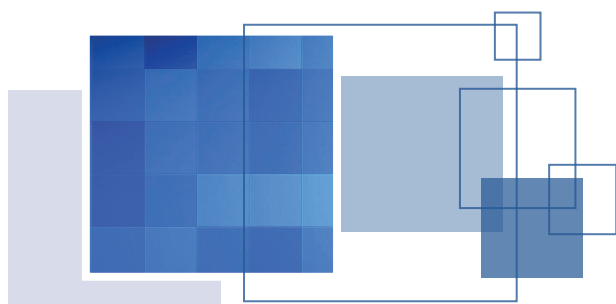
- Network and problem solve among colleagues
- Resolve real-time issues and challenges

INSTRUCTIONAL APPROACH

- Adult-centered learning
- Facilitated discussions
- Real world experiences from host businesses and participants
- Application of theories and tools
- Current issues and problems

2016 PARTICIPATING COMPANIES

RCM&D *Wegmans*



SEMINAR FRAMEWORK

- Four full days
- Supplemental readings, instruments, videos
- Attendance at MHEI's 2017 Annual Leadership Conference (\$750 value!)
- Continuing Medical Education credits awarded upon completion

SEPTEMBER 14
Leadership Defined

NOVEMBER 9
Understanding
Leadership Technique

OCTOBER 12
Building Leadership
Character

DECEMBER 7
Applying Leadership
Techniques

SEMINAR FEE: \$2,500

Payable by August 1, 2017

To register, and for questions,
please contact Alison Burrows:
aburrows@mhei.org or 410.796.6221

mhei
Lead. Educate. Inform.

maryland healthcare
education institute
6820 Deerpath Rd.,
Elkridge MD 21075
410.796.6239 (p)
www.mhei.org

*These educational activities are jointly provided by AXIS
Medical Education and MHEI.*

CONTINUING EDUCATION

ACCREDITATION STATEMENT

This activity is planned and implemented by AXIS Medical Education and The Maryland Healthcare Education Institute (MHEI). AXIS Medical Education is accredited by the Accreditation Council for Continuing Medical Education (ACCME), the Accreditation Council for Pharmacy Education (ACPE), and the American Nurses Credentialing Center (ANCC) to provide continuing education for the healthcare team.



CREDIT DESIGNATION FOR PHYSICIANS *(each session is 5.75 hours)*

AXIS Medical Education designates this live activity for a maximum of 5.75 *AMA PRA Category 1 Credit(s)*[™]. Physicians should claim only the credit commensurate with the extent of their participation in the activity.

AXIS CONTACT INFORMATION

For information about the certification of this activity, please contact AXIS at info@axismeded.com

DISCLOSURE OF CONFLICTS OF INTEREST

AXIS Medical Education requires instructors, planners, managers and other individuals and their spouse/life partner who are in a position to control the content of this activity to disclose any real or apparent conflict of interest they may have as related to the content of this activity. All identified conflicts of interest are thoroughly vetted by AXIS for fair balance, scientific objectivity of studies mentioned in the materials or used as the basis for content, and appropriateness of patient care recommendations.

The faculty Mark Rulle, EdD hereby states that he or his spouse/life partner do not have any financial relationships or relationships to products or devices with any commercial interest of any amount during the past 12 months.

The following AXIS and MHEI planners and managers, Blair M. Eig, M.D., M.B.A., M.A., Kevin Smothers, M.D., FACEP, Mark Rulle, EdD, Kelly Heacock Yost, Ronald Viggiani, M.D. and Dee Morgillo, MEd., CHCP, hereby state that they or their spouse/life partner do not have any financial relationships or relationships to products or devices with any commercial interest of any amount during the past 12 months.

DISCLAIMER

Participants have an implied responsibility to use the newly acquired information to enhance patient outcomes and their own professional development. The information presented in this activity is not meant to serve as a guideline for patient management. Any procedures, medications, or other courses of diagnosis or treatment discussed or suggested in this activity should not be used by clinicians without evaluation of their patient's conditions and possible contraindications and/or dangers in use, review of any applicable manufacturer's product information, and comparison with recommendations of other authorities.

CRITERIA FOR COMPLETION

- Attend/participate in the educational activity and review all course materials.
- Sign the sign-in rosters.
- Complete the CE Declaration/Evaluation form online by the date shown in the chart below. If you do not complete the online evaluation by this date, you will not be able to get CE credit for this event. Instructions will be provided.
- Upon successful completion of the online form, your statement of completion will be presented to you to print.

EVENT DATE

September 14, 2017
October 12, 2017
November 9, 2017
December 7, 2017

PORTAL CLOSE DATE 11:59 PM ET

September 28, 2017
October 26, 2017
November 23, 2017
December 21, 2017